

RICAMBI PER MOTORI: STANDARD. CON AUTOAVVOLGENTE. CON FILTRO A BAGNO D'OLIO.

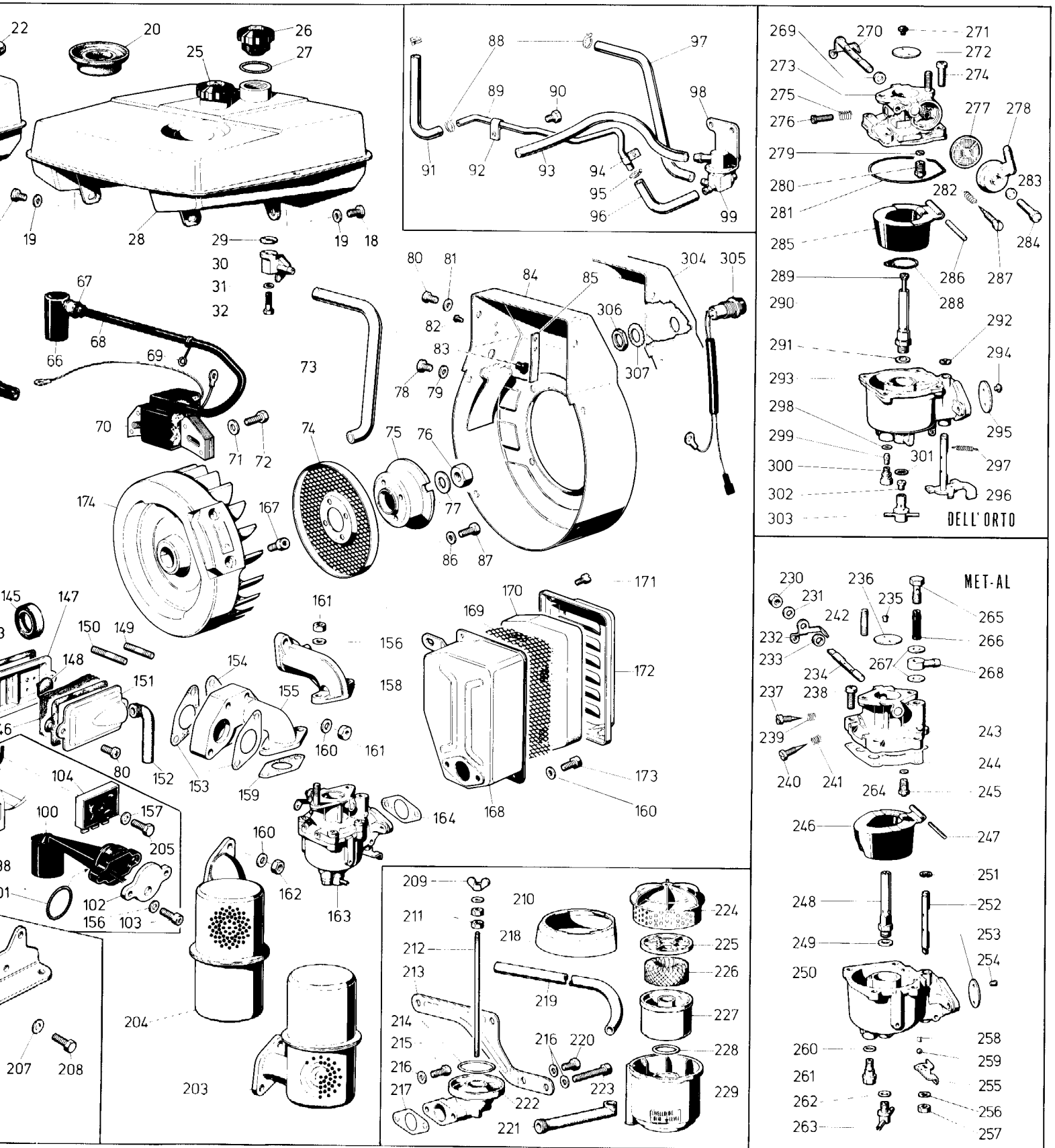
PER APPLICAZIONI SPECIALI CONSULTARE IL CATALOGO PRESSO I CENTRI ASSISTENZA E RICAMBI.

PIECES POUR MOTEURS. STANDARD. AVEC LANCHEUR A CABLE. AVEC FILTRE A AIR A BAIN D'HUILE.

POUR LES ADAPTATIONS CONSULTER LE CATALOGUE AUPRES DES AGENTS SERVICE.

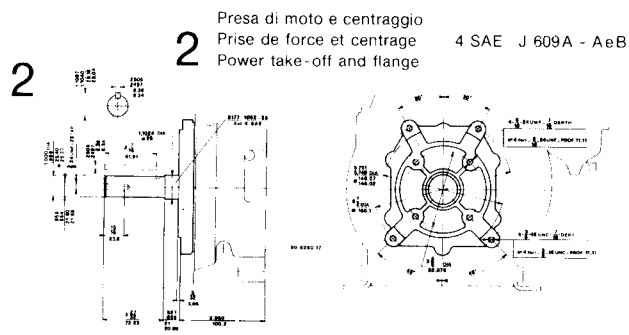
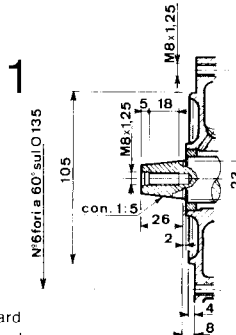
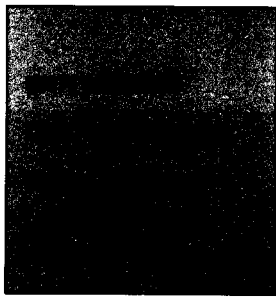
SPA  
OIL  
FOR  
TER.

# IE IM

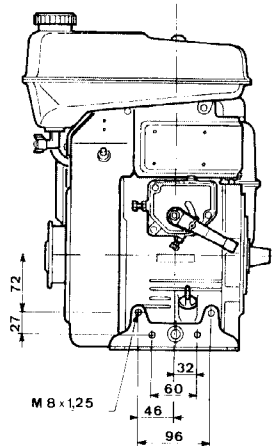
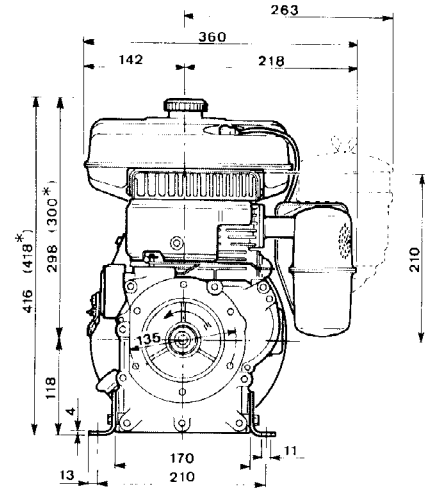
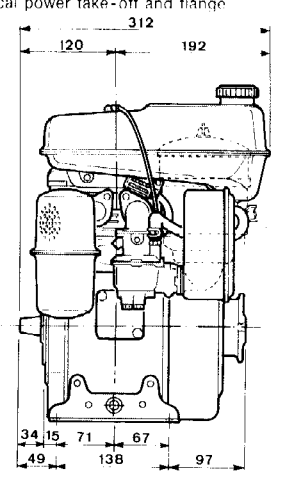


SPARE PARTS FOR ENGINES: STANDARD. WITH REWIND STARTER. WITH OIL BATH AIR CLEANER. FOR SPECIAL APPLICATIONS SEE MASTER CATALOG AT SERVICE CENTER.

ERSATZTEILE FÜR MOTOREN: STANDARD. MIT REVERSIERSTARTER, MIT ÖLBADLUFTFILTER. FÜR SONDERANFERTIGUNGEN SIEHE ERSATZTEILKATALOG BEI SERVICE WERKSTÄTTEN.

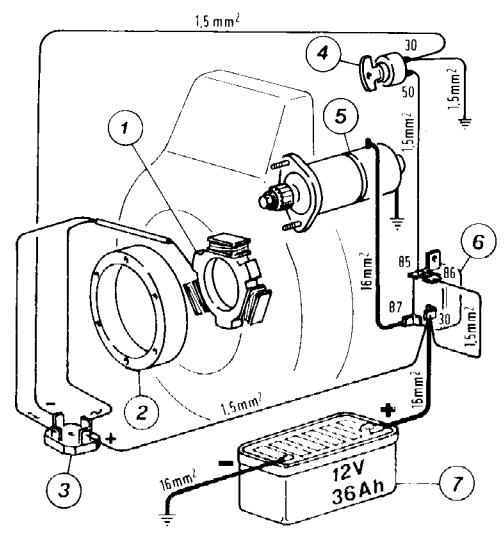


1 Presa di moto conica e centraggio standard  
Prise de force conique et centrage standard  
Standard conical power take-off and flange

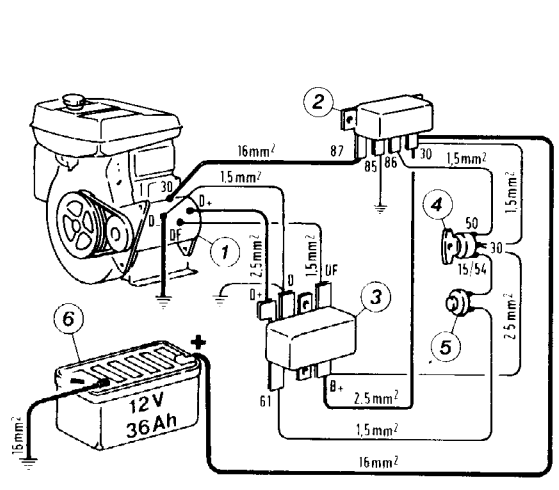


\* MOTORE A PETROLIO / MOTEUR A PETROLE / KEROSENE ENGINE

MOTORINO - DEMARREUR - STARTING MOTOR - ANLASSER



DINAMOTORE - DYNASTART - STARTER GENERATOR - LICHTANLASSER



①	Indotto alter.	Induit alternateur	Alternator armat. winding	Anker des drehst. gen.
②	500-1156-98	Induttore	Inducteur	Inductor
③	90-6607-01	Ponte raddr.	Pont de redressement	Rectifying bridge
④	422-5040-04	Interr. avviam.	Interrupt. à clef.	Key switch
⑤	147-5840-58	Motorino	Démarrreur	Start. motor
⑥	90-5041-19	Interr. a solen.	Interrupt à solen.	Solenoid switch
⑦	---	Batteria	Batterie	Battery

①	90-3375-07	Dinamotore	Dynastart	Start. generator	Lichtanlasser
②	90-5041-19	Interr. a solen.	Interrupt à solen.	Solenoid switch	Magnetschalter
③	6014-7362-72	Regolat. di tens.	Régulateur	Voltage regulator	Reglerschalter
④	422-5040-04	Interr. avviam.	Interrupt. à clef.	Key swith	Schlüsselschalter
⑤	422-8345-03	Spia carica batt.	Temoin charge batt.	Battery charge warning light	Ladeanzeiglampe
⑥	---	Batteria	Batterie	Battery	Batterie



# intermotor serie IM

FIG. NO.	MATRICOLA PART.NO.	PEZZI PIECES	NOTE REMARKS	FIG. NO.	MATRICOLA PART.NO.	PEZZI PIECES	NOTE REMARKS	FIG. NO.	MATRICOLA PART.NO.	PEZZI PIECES	NOTE REMARKS
				47	9.7626.014			96	9375.109		
				48	90.5201.049			97	9375.107		
				49	270.6550.010			98	6040.8546.037		
1C	1470.5840.119		PW1/3 - MOTORINO AVV. /STARTING MOTOR	50	9.1165.001			99	6040.7755.062		
1	1470.6456.009			51	9.3200.015			100	*		
2	*			52	9.3240.004			100C	1470.3440.015		FIG. 100+101+102 +103+156
2C	1470.8140.097		FIG. 2+8	53	90.6330.057			101	9.1200.082		
3	1470.8815.062			54	9.9790.028	2	M 5x0,8x10	102	1470.6370.215		
4	147.4908.033			55	147.5655.047			103	9.9730.115	2	M 5x0,8x14
5	147.9599.045			56	1470.5655.108		●	104	147.2457.006		
6	147.6617.009			57	9.1750.043	2	M 4x0,7x25	105	9.3240.004		M 6x1
7	147.8310.043			58	147.1261.070			106	9.7555.003		
8	*			59	147.8480.002			107	9.7555.005		
9	1470.8815.063				147.8210.096		IM 250	108	147.5204.022		
10	9.9790.039		M 6x1x12		147.8210.097		+ 0,50	109	<del>9.1165.006</del>		
11	147.2920.074				147.8210.098		+ 1	110	9.7626.059		
12	147.9201.073		IM 250, IM 251		150.8210.077		IM 300	111	147.6141.063		
	155.9201.074		IM 300, IM 301		150.8210.078		+ 0,50	112	147.5204.006		
	158.9201.075		IM 350, IM 252, IM 351		150.8210.079		+ 1	113	9.7565.004		
	157.9201.076		IM 302		158.8210.099		IM 350	114	9.3240.008		M 6x1x5
	159.9201.077		IM 352		158.8211.001		+ 0,50	115	90.3430.055		
13	147.4730.046		IM 250, IM 251	60	158.8211.002		+ 1	116	9.1165.010		
	155.4730.047		IM 300, IM 301	60C	*		FIG. 57+58+59+60	117	147.7200.064		
	158.4730.052		IM 350, IM 351, IM 352		147.6502.080		IM 250	118	*		
			IM 252, IM 302		147.6502.082		+ 0,50	119	*		
14	70.2135.049				147.6502.083		+ 1	120	*		
15	147.2100.006		BOSCH W 95 T1		150.6502.015		IM 300	120C	147.4910.031		FIG. 118+119+120
16	9.1780.055	9	M 10x1,5x45		150.6502.016		+ 0,50	121	9.7260.017		
17	9.7626.028	9			150.6502.017		+ 1	122	147.8780.010		
18	9.9790.039	2	M 6x1x12		158.6502.081		IM 350	122C	147.7362.075		FIG. 115+116+117 +120C+121+122
19	9.7500.018	2			158.6502.084		+ 0,50	123	6177.2280.050		
20	147.5401.023				158.6502.085		+ 1	124	9.6130.050		
21	*			61	90.9032.016			125	90.2183.031		
21C	147.9080.131		(FIG. 21+22) IM 250, 251	62	9.1200.003			126	70.5800.072		
			IM 300, 301, 350, 351 e	63	9.3240.003	2	M 4x0,7	127	9.9790.047		M 6x1x17
			MOTOCOLTIVATORE/AND	64	90.9685.022		SCARICO / EXHAUST	128	*		
			MOTOR TILLER	65	90.9652.016		ASPIR. / INTAKE	128C	147.1526.026		FIG. 128+129+130 - 0,25 - 0,50
22	*			66	70.1450.001		STANDARD	129	90.6330.055		
23	*		IM 250, 251, 300, 301	67	1.5400.007			130	9.1760.030	2	M 6x1x45
			350, 351	68	*			131	9.9800.051		M 8x1,25
23C	153.8103.004		Standard FIG. 21+22	68C	147.2187.002		FIG. 66+67+68	132	147.7670.093		
			+23+24	69	70.2470.054			133	90.8460.083	2	
			Motocoltiv./Motor tiller	70	*			134	*		
24	147.7755.055		IM 250, 251, 301, 350, 351	70C	147.1567.097		STANDARD - FIG. 66+67	134C			DA FIG. 133 a 137 STANDARD
25	147.9043.048		Benzina / Gasoline IM 252				+68+69+70				IM 250, 251, 252
26	*		IM 302		147.1567.096		Con schematura/With shield				IM 300, 301, 302
26C	147.9043.050		Petrolio / Kerosene IM 352				FIG. 67+68+69				IM 350, 351, 352
27	9.1200.015			71	9.7625.007	2	+70+139				Avv. Elettr./Elect. Starting
28	*		IM 252, 302, 352	72	9.1760.006	2					IM 250, 251, 252
28C	147.8103.003		FIG. 25+26C+28+30C	73	147.9375.099		M 6x1x20				IM 300, 301, 302
29	45.4775.052		IM 252, IM 302, IM 352	74	147.5096.013						IM 350, 351, 352
30	*			75	147.6961.014						
30C	147.7755.061		IM 252, IM 302, IM 352	76	9.3260.055		M 16x1,5 SIN.				
			FIG. 29+30+31+32	77	9.7530.018						
31	9.7565.004			78	9.9790.039	4	M 6x1x12				
32	9.1760.014		M 6x1x40	79	9.7500.018	2					
33	147.2691.051		ACCELERATORE	80	9.9790.039	4	M 6x1x12				
34	90.6000.031		A DISTANZA	81	9.7500.018	2					
35	9.9790.023			82	9.7481.025	2					
36	70.9180.011		REMOTE THROTTLE	83	70.7195.003						
37	9.3240.009		CONTROL	84	*						
38	147.1557.058	3		84C	147.2568.053		STANDARD - FIG. 82, 83, 84, 85				
39	147.6140.137						Avv. Elettr./Elect. Starting				
40	9.1760.086		M 6x1x30	85	147.2568.064						
	9.1760.071		● M 6x1x55	86	147.5640.010						
41	147.5200.202			87	9.7555.004	4					
42	147.5680.067			88	9.3630.057	4	M 6x1x20				
43	9.1760.082		M 6x1x35	89	6040.9375.065						
44	9.1165.006			90	9.1760.001		M 6x1x10				
45	90.6371.013			91	9375.108						
46	*			92	1470.3617.037						
46C	147.2691.053		FIG. 45+46+47+48	93	20.9375.193						
			49+50+51+52+53	94	9.3617.018						
				95	9.3630.057						

147.8770.29



# intermotor serie IM

FIG. NO.	MATRICOLA PART.NO.	PEZZI PIECES	NOTE REMARKS	FIG. NO.	MATRICOLA PART.NO.	PEZZI PIECES	NOTE REMARKS	FIG. NO.	MATRICOLA PART.NO.	PEZZI PIECES	NOTE REMARKS
				188	9.3001.009		30x62x16	249	999.4530.007		
				189	90.7215.029			250	147.2825.029		
				190	147.1011.055	2	IM 250, 251, 252 e/and ●	251	9.1165.010		
					158.1011.071		IM 300, 301, 302	252	*		
145	9.1213.002		28x38x7				350, 351, 352	252C			DA FIG. 251 a 257
146	90.5976.001			191	9.1165.006				999.6100.012		IM 250, 251, 252
147	90.7950.036			192	1470.3410.054				999.6100.021		IM 300, 301, 302
148	180.9695.013			193	1470.2136.022				999.6100.022		IM 350, 351, 352
149	9.6760.047	2	IM 250, 251, 300, 301	194	90.6366.004	3		253	90.3605.026		IM 250, 251, 252
			350, 351	195	1470.5680.064				155.3605.028		IM 300, 301, 302
	9.6760.015	2	M 6x1x16 (Aspir./Intake)	196	1470.5725.041				158.3605.029		IM 350, 351, 352
			IM 252, 302, 352	197	90.4055.005		Standard	254	9.9810.010	2	M 3x0,5
			M 6x1x40 (Aspir./Intake)		9000.4055.010		HAKO	255	90.5195.010		
150	9.6760.047	2	IM 250, 251, 300, 301	198	1470.7100.244			256	9.7555.003		
			350, 351	199	1470.5801.179			257	9.3240.004		M 5x0,8
	9.6760.013	2	M 6x1x16 (Scar./Exhaust)	200	1470.3430.101			258	999.5695.007		
			IM 252, 302, 352	201	1470.7951.064			259	9.8245.003		
			M 6x1x30 (Scar./Exhaust)	201C	147.1471.069		DA FIG. 191 a 201	260	9.1200.052		
151	90.2690.046			202	9.9790.037	4		261	*		∅ 50
152	147.9580.018			203	147.5462.077		Motocoltiv./Motor tiller	261C	999.4125.048		FIG. 260+261
153	158.4501.018	1	IM 250, 251, 300, 301	204	147.5462.070		Standard	262	9.1200.001		
			350, 351	205	9.1760.024		M 6x1x22	263	*		
		2	IM 252, 302, 352	206	90.6427.006	2		263C			FIG. 262+263
154	158.4501.019			207	9.7565.007	8			147.4126.005		∅ 90 (IM 250, 251,
155	89.9708.002			208	9.1770.002	8	M 8x1,25x16				252, 300, 301, 302)
156	9.7555.003	2		209	9.3200.001				158.4126.015		∅ 94 (IM 350, 351, 352)
157	9.7555.004	1		210	9.7625.005				90.4690.007		
158	158.2942.058		IM 250, 251, 300,	211	9.3240.004				147.1901.008		M 10x1,25
			301, 350, 351	212	150.9245.055				147.3730.034		
159	158.4470.013			213	155.8490.076				9.4350.005		
160	9.7565.004	2		214	9.1200.070				147.7270.082		
161	9.3240.008	2	M 6x1	215	9.9731.085		M 6x1	268C	147.4896.013		FIG. 265+266+267+268
162	9.3240.009	2	M 6x1x5	216	9.7565.004			269	*		
163	DELL'ORTO			217	147.4490.036			270	*		
	147.2151.084		IM 250, 251, 252	218	1470.6927.081			270C			FIG. 270+271+272
			300, 301, 302	219	147.9375.098				999.6100.028		IM 350, 351, 352
	158.2151.085		IM 350, 351, 352	220	9.1760.003		M 6x1		999.6100.029		IM 250, 251, 252
	MET. AL			221	150.9400.031						300, 301, 302
	147.2151.063		IM 250, 251, 252	222	150.8740.092						
	155.2151.064		IM 300, 301, 302	223	9.1760.061		M 6x1	271	*		
	158.2151.065		IM 350, 351, 352	224	*			272	*		
164	147.4490.036			225	*			273	*		
165	9.4350.006	2		226	150.2175.024			274	*		
166	90.8980.010	2	1/4 GAS	227	*			275	147.5801.141		
167	9.9730.024	2	M 8x1,25x16	228	9.1200.085			276	9.9820.112		
168	147.7870.011			229	*			277	10.3730.041		
168C	147.3702.075		FIG. 168+169+170	230	150.3701.093		DA FIG. 224 a 229	278	147.6491.021		
			+171+172	230C	155.3703.004		DA FIG. 209 a 229	279	*		
169	147.3930.060			231	9.3240.004		M 5x0,8	280	147.7996.014		
170	147.5496.062			232	9.7555.003			281	*		
171	9.9760.011	2	3,5x13	233	999.8510.030			282	147.5801.141		
172	147.2605.013			234	147.1301.083			283	*		
173	9.1760.003	2	M 6x1x12	234C	*			284	9.9820.113		
174	*							285	147.4105.019		
174C	147.9884.090		Standard (FIG. 167+174)				DA FIG. 230 a 236	286	999.6231.077		
	147.9884.095		Con corona per avv. elettr./		999.6100.011		IM 250, 251, 252	287	9.9850.073		
			With ring gear for electr.				300, 301, 302	288	*		
			starting.		999.6100.027		IM 350, 351, 352	289	999.3588.027		IM 350, 351, 352
	147.9884.074		Per alternatore/	235	9.9810.010	2	M 3x0,5		999.3588.028		IM 250, 251, 252
			For alternator	236	999.3605.018		IM 250, 251, 252				300, 301, 302
							300, 301, 302	290	999.7996.013		
175	9.3030.028				999.3605.030		IM 350, 351, 352	291	*		
176	9.1213.056		28x38x7	237	999.9850.037			292	*		
177	9.9732.060	9	M 6x1x35	238	9.9790.091	4	M 5x0,8	293	*		
178	147.6647.006			239	999.5780.011			294	*		
179	147.4601.029			240	90.9850.051			295	*		
180	9.1770.039			241	70.5780.006			296	*		
181	9.7625.060		M 8x1,25x28	242	9.6760.034	2	M 6x1	296C			FIG. 294+295+296
182	9.7481.024	3	3,5x8	243	147.2751.098		IM 250, 251, 252		147.6100.035		IM 250, 251, 252,
183	147.2194.014						300, 301, 302				300, 301, 302
184	90.9000.027						IM 350, 351, 352		147.6100.030		IM 350, 351, 352
185				244	158.2750.100				147.5801.142		
186	*			245	147.4431.062				9.1200.172		
186C	147.1052.029		FIG. 182+183+184	246	90.7996.011				147.4126.016		∅ 40
			+185+186+187	247	999.6110.042				147.6610.004		
187	9.2280.044		4x4,5x16	248	999.3588.010				9.1200.173		



# intermotor serie IM

FIG. NO.	MATRICOLA PART.NO	PEZZI PIECES	NOTE REMARKS	FIG. NO.	MATRICOLA PART.NO	PEZZI PIECES	NOTE REMARKS
----------	-------------------	--------------	--------------	----------	-------------------	--------------	--------------

FIG. NO.	MATRICOLA PART.NO.	PEZZI PIECES	NOTE REMARKS
302	147.4126.017		∅ 90 - IM 250, 251, 252, 300, 301, 302
	158.4126.018		∅ 92 - IM 350, 351, 352
303	147.6610.003		
304	1470.2569.189		Con spia / With warning light.
	1470.2569.188		Con spia e avv. elettr. / With warning light and electr. starting FIG. 305+306
305C	1470.8345.008		
306	*		
307	9.7540.010		

**SERIE GUARNIZIONI CARBURATORE DELL'ORTO:  
CARBURATEUR GASKET SET:**

147.8180.071

**BLOCCHI MOTORE:  
SHORT BLOCKS:**

147.1560.063

155.1560.064

158.1560.065

147.1560.166

155.1560.167

158.1560.168

Standard	IM 250, 251, 252
Standard	IM 300, 301, 302
Standard	IM 350, 351, 352
Avv. Elettrico / Electr. Starting	IM 250, 251, 252 IM 300, 301, 302 IM 350, 351, 352

**BLOCCHI MOTORE PER DISPOSITIVO LIVELLO OLIO:  
SHORT BLOCKS FOR OIL LEVEL WARNING LIGHT:**

1560.164

1560.171

1560.169

1560.172

1560.170

1560.173

IM 250, 251, 252
■ " " "
IM 300, 301, 302
■ " " "
IM 350, 351, 352
■ " " "

**SERIE GUARNIZIONI MOTORE:  
ENGINE GASKET SET:**

147.8180.057

155.8180.058

158.8180.059

IM 250, 251
IM 300, 301
IM 350, 352
351, 302, 252

**SERIE ACCESSORI PER AVVIAMENTO A STRAPPO:  
ACCESSORY SET FOR ROPE STARTING:**

183.8140.098

147.8140.072

Standard
Avv. Autoavvolg. / Rewind starter

■ PER AVVIAMENTO ELETTRICO  
FOR ELECTRICAL STARTING

● PER GRUPPO ELETTROGENO  
FOR GENERATING SET

C. COMPLESSIVO  
ASSEMBLY

\* NON FORNITO SCIOLTO  
NOT SUPPLIED SEPARATELY